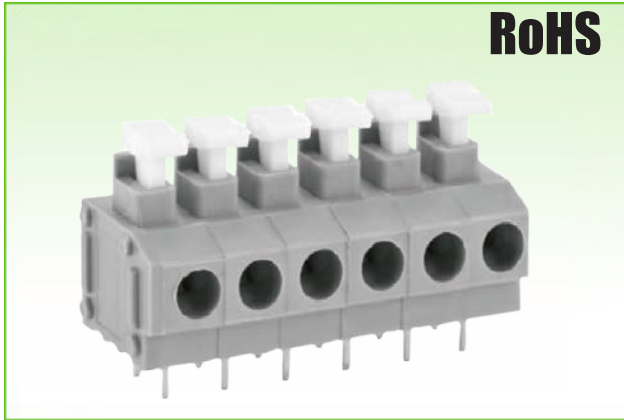


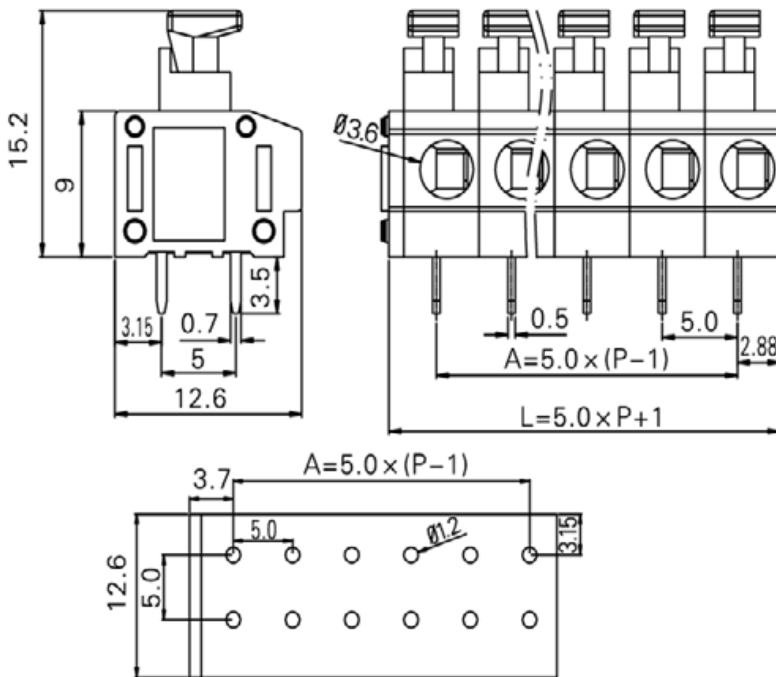


5.00mm Pitch



		
Rated Voltage	300V	320V
Rated Current	10A	16A
Insulation Withstand Voltage	1600V / Min.	
Insulation Resistance	500MΩ or more at DC500V	
Rated Surge Voltage	8KV	
Temperature Range	-40°C to +115°C	
Wire Range	20-14AWG Sol & Str	0.34mm <sup>2</sup> -1.5mm <sup>2</sup> Sol & Str, 2.5mm <sup>2</sup> Sol Max
Strip Length	9.0mm	
Wire Orientation	30° (Wire-to-Board)	
Operating Temperature	-40°C ~ +105°C	
Soldering	Single Wave, 260°C 5 Sec Max Double Wave, 260°C 10Sec Max.	

Units: mm



- ① Housing: PA66, UL94V-0
- ② Solder Pin: Copper Alloy, Tin Plated

### Part Numbering System:

500-500R - XXP - XXX

①      ②      ③

① Series

② Number of Poles: 02, 03, 04, ..., 24

③ Insulator Color: GRY = Grey